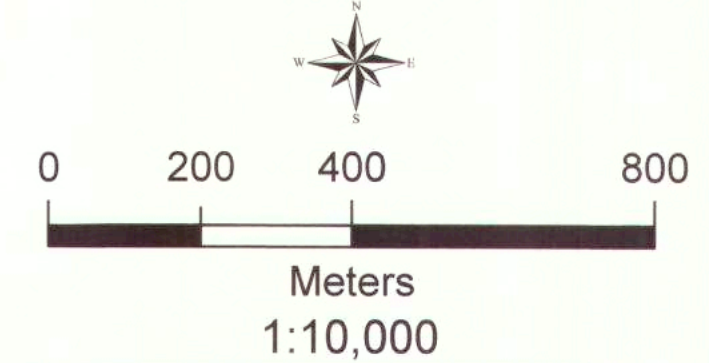
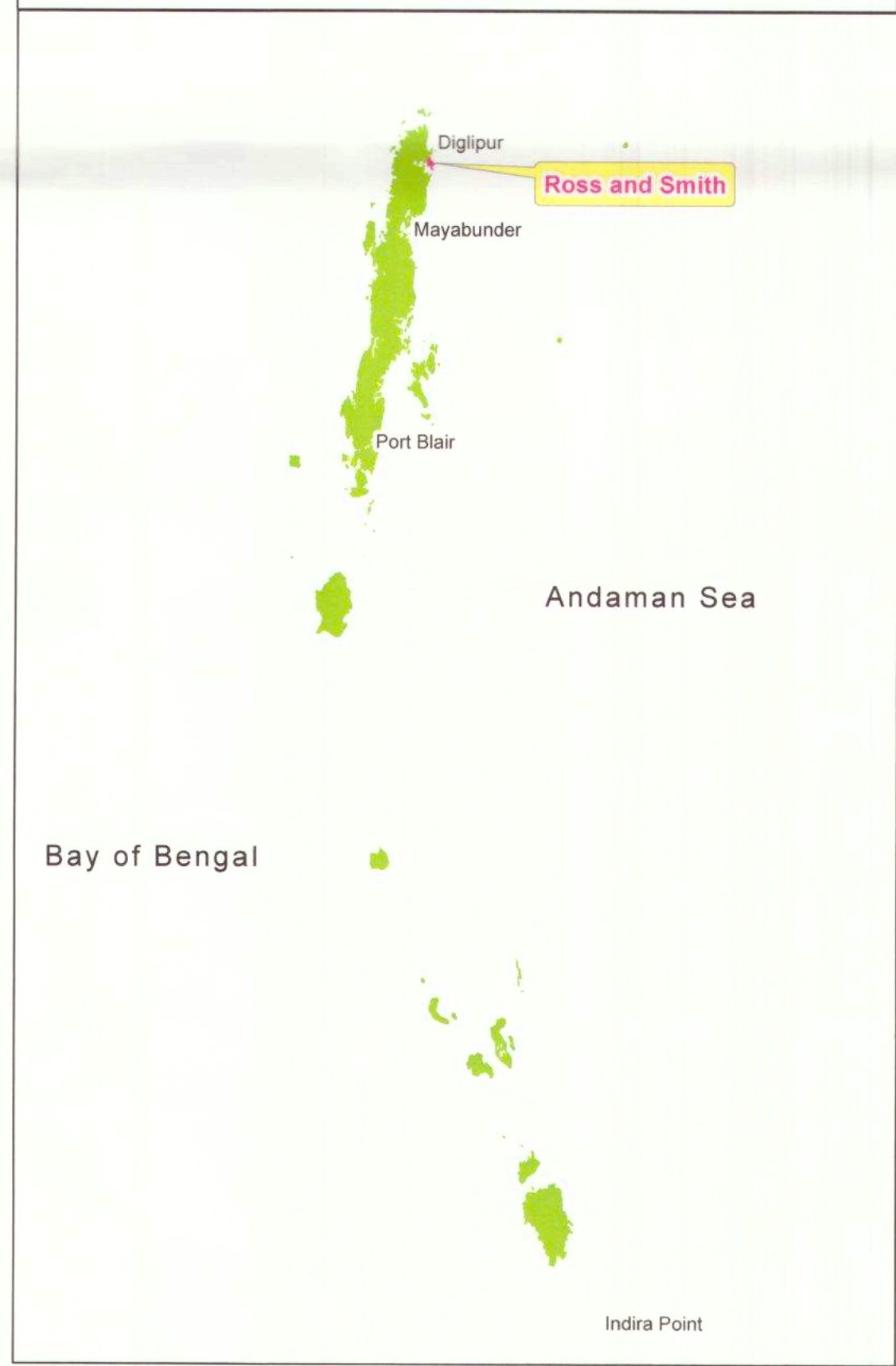
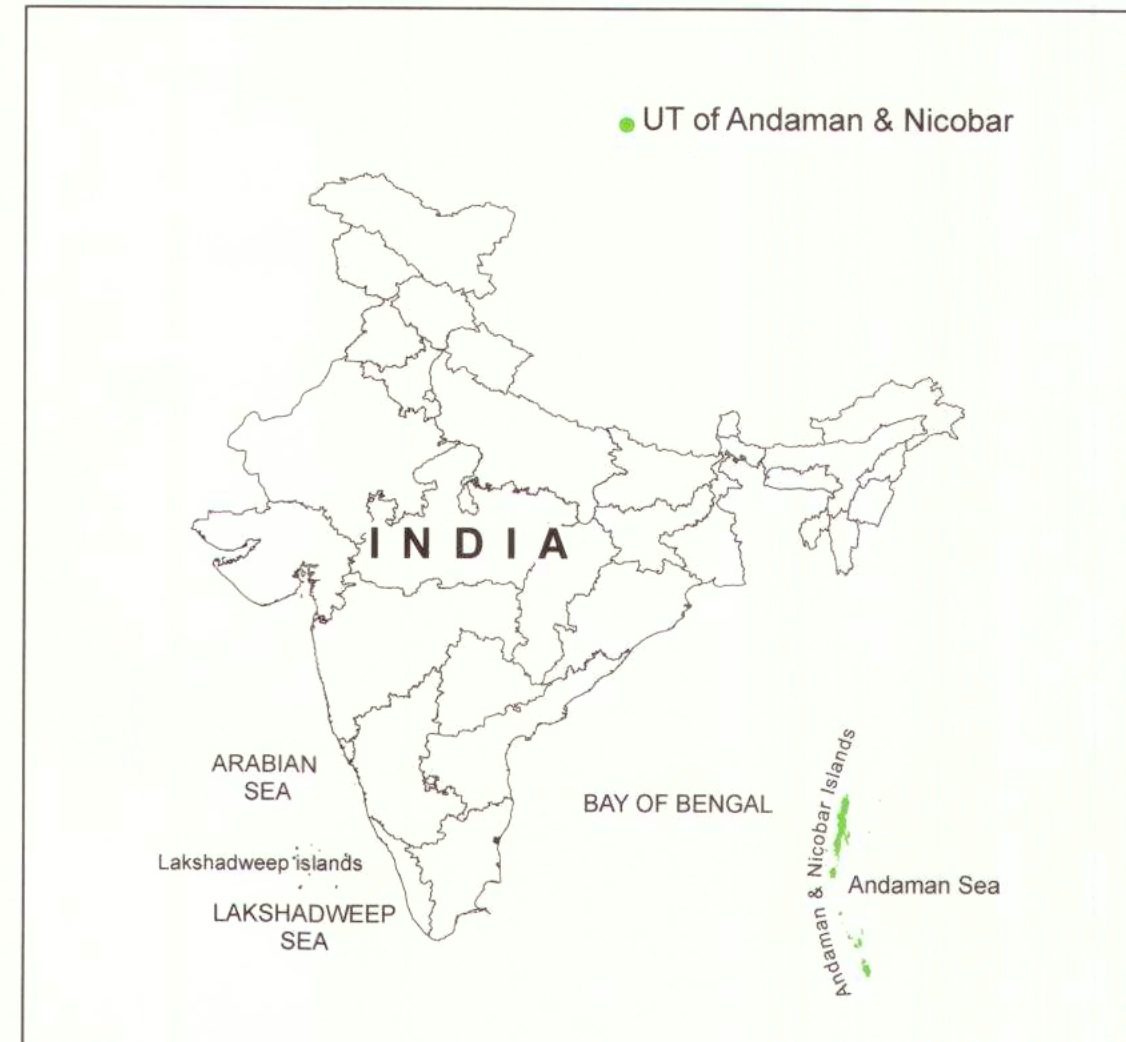
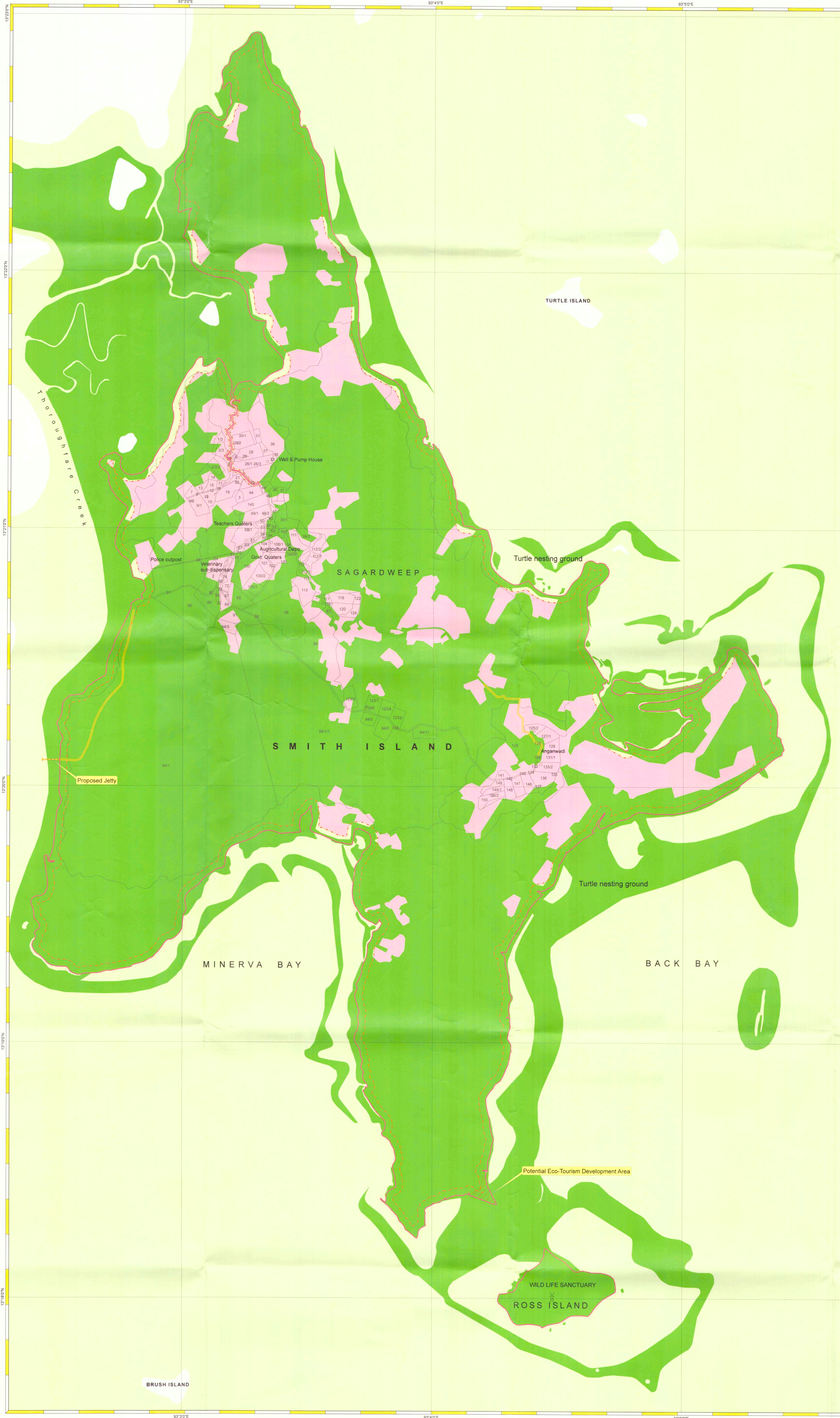


INTEGRATED ISLAND MANAGEMENT PLAN

SMITH ISLAND

UNION TERRITORY OF ANDAMAN & NICOBAR

Projection :- UTM Datum :- WGS 1984



Legend

- Lighthouse
- High Tide Line
- 50m No Development Zone
- Survey Plots
- Preservation Zone
- Conservation Zone
- Regulated Development Zone
- APWD Proposed Road
- APWD Proposed Jetty
- Eco-Tourism development area

DATA SOURCE
 I) National Center for Sustainable Coastal Management
 1) HTL, LTL; 2) Infrastructure facilities such as Road, Lighthouse, etc.
 II) Union Territory of Andaman and Nicobar Administration
 1) Administrative Boundaries; 2) Tribal Reserve Boundaries, etc

ABBREVIATIONS
 IIMP : Integrated Island Management Plan
 NDZ : No Development Zone
 IPZ : Island Protection Zone

Prepared as per Island Protection Zone Notification, 2011

Prepared by: R. Ramu
 Technical Secretary, National Centre for Sustainable Coastal Management, MoEF & CC

Checked by: R. Ramu
 Director, National Centre for Sustainable Coastal Management, MoEF & CC

Approved by: R. Ramu
 National Special Zone Management Authority, MoEF & CC, Government of India

NCSM
 National Centre for Sustainable Coastal Management
 (Ministry of Environment, Forest & Climate Change)
 Chennai - 600 025

Prepared for:

 Andaman & Nicobar Administration